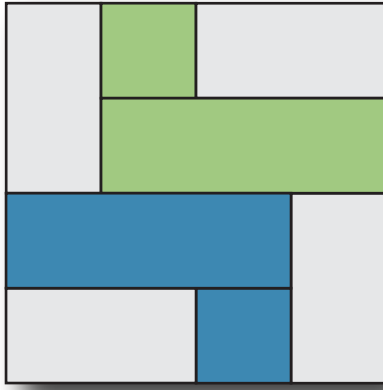
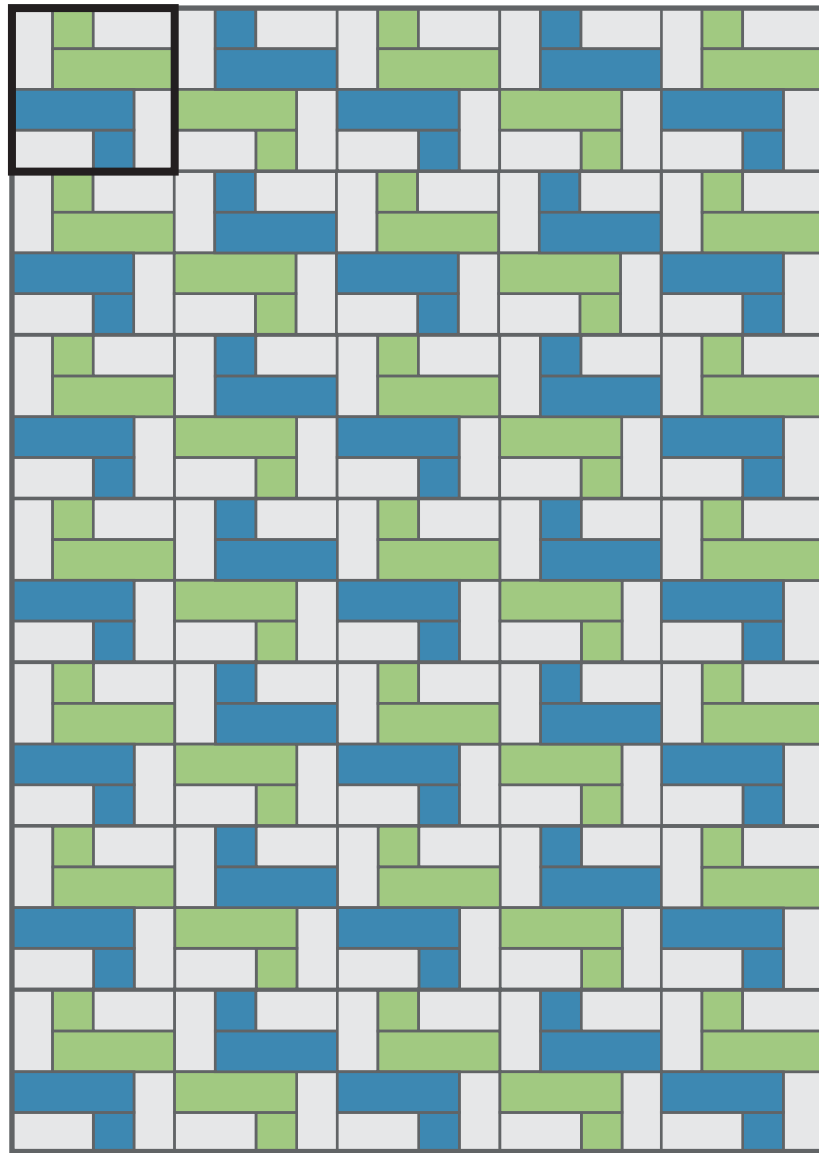


Puzzle Box



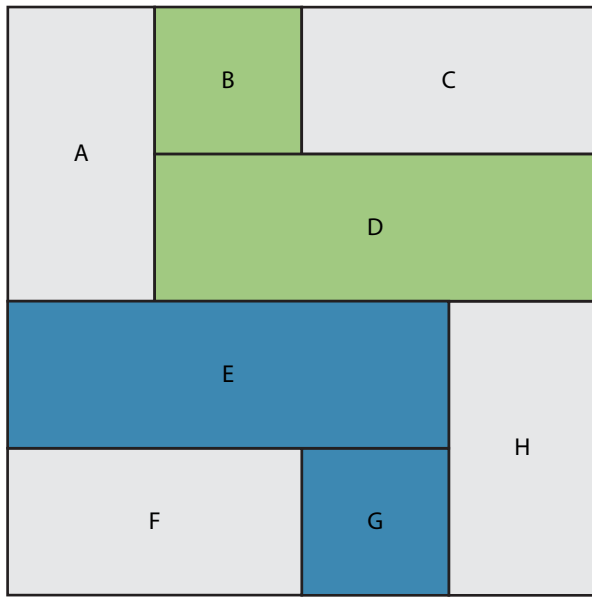
This tutorial shows you how to cut and piece a block that is 12.5" x 12.5" unfinished.

The quilt example below shows thirty-five quilt blocks with alternate blocks rotated 180°, for a quilt that will measure 60" x 84".



angela tackett designs

SECTION ONE: Cutting Instructions



Cut one of each of the following pieces for one block.

A 3.5" x 6.5" of background fabric

B 3.5" x 3.5" of color one fabric

C 6.5" x 3.5" of background fabric

D 9.5" x 3.5" of color one fabric

E 9.5" x 3.5" of color two fabric

F 6.5" x 3.5" of background fabric

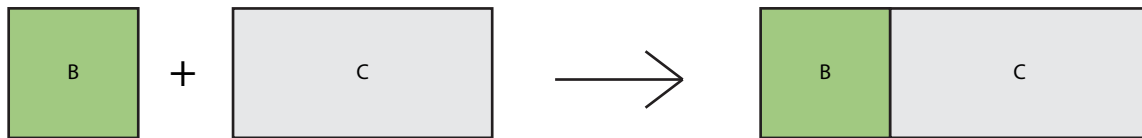
G 3.5" x 3.5" of color two fabric

H 3.5" x 6.5" of background fabric

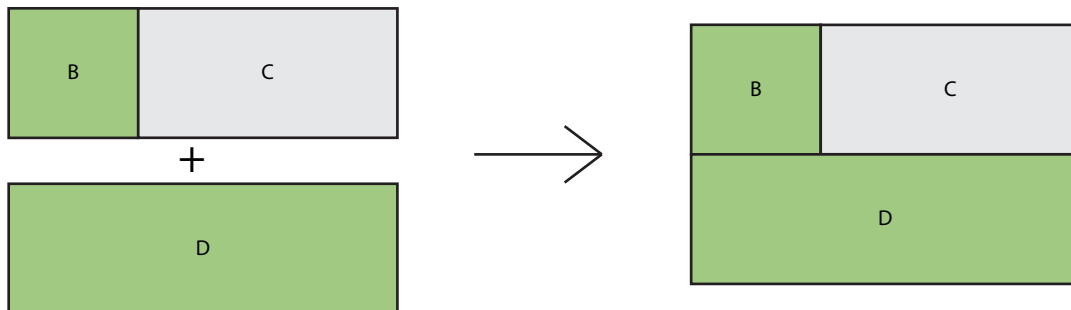
Sew pieces right sides together as follows using a 1/4" seam allowance. Press seams open. Note that the bottom half of the block is pieced exactly like the top half, but uses a different color (or use the same print/color) and is rotated 180°.

SECTION TWO: Piece Top Half of Block

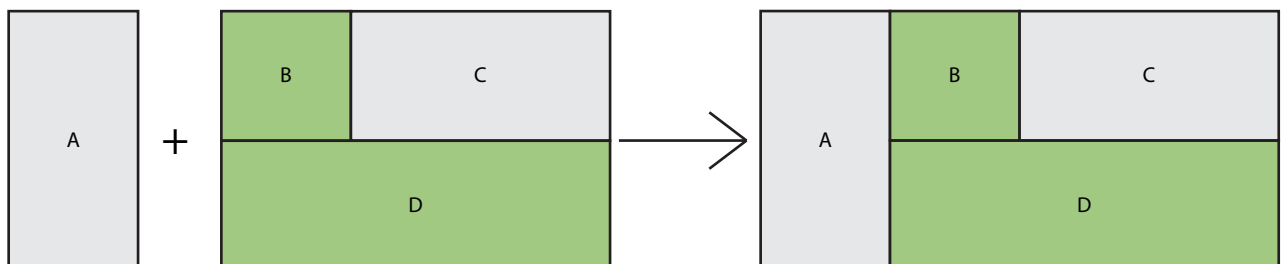
STEP ONE



STEP TWO

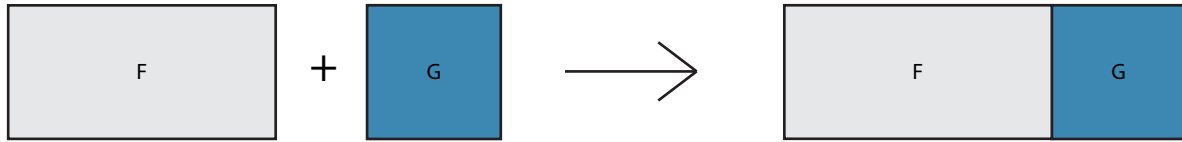


STEP THREE

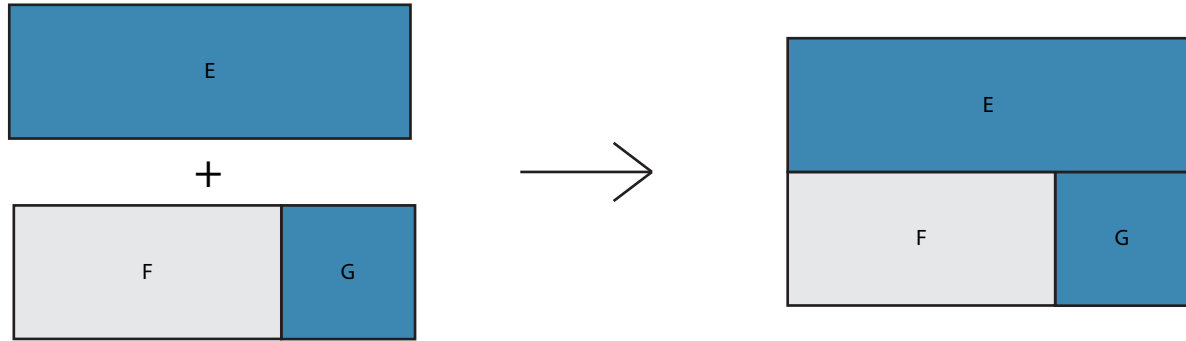


SECTION THREE: Piece Bottom Half of Block

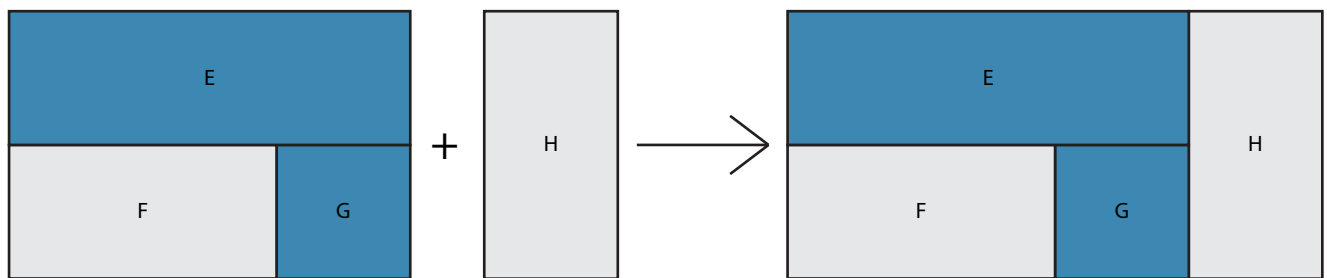
STEP ONE



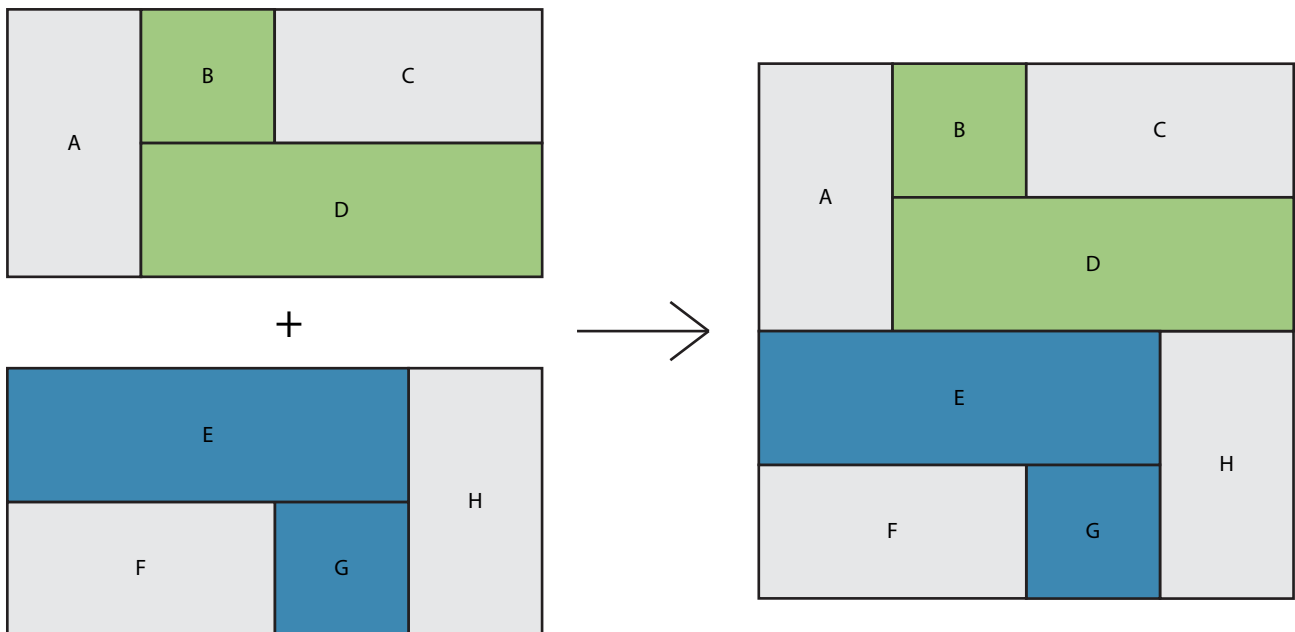
STEP TWO



STEP THREE



SECTION FOUR: Join Top Half and Bottom Half



Puzzle Box

